

General Report No. 1786.

Individual Report No. 1.

Risk Nos. 1 and 2.

Risk : Car Houses.

Class : 2-B. and 1-DD. and 1 B.

Location : S. High and Hoster Sts., Columbus, Ohio.

Owner and Occupant : The Columbus Railway & Light Co.

Date : May, 1909.

See Map No. 2.

SUMMARY.

Two risks, a **Car House Wash Room & Stable**, located at the corner of High & Hoster Streets, and a **Car Storage Barn** located across in the rear on St. Pearl Street. The first mentioned consists of two principal brick sections with a non-standard division wall having unprotected openings between, the larger section having a corner partitioned off and used as a horse and wagon stable, and also a rear section of frame iron clad construction. This building is quite old and somewhat dilapidated, but has fair care and standard public fire protection and moderately good private protection. The car storage barn is situated 30 feet in the rear and has brick walls and a wooden roof structure, there being standard public protection but no private protection except watchman with A. D. T. station. Both risks have numerous exposures most of which are from dwellings.

PROMINENTLY DESIRABLE FEATURES.

Floors are of non combustible construction throughout the repair and car storage sections. There is excellent public fire protection with steamer only three squares distant, and fire call box located in the risk. There is fair private protection consisting of vertical pipe and hose system, chemical extinguishers distributed, and a watchman with rounds registered by the A. D. T. system. Lighting wiring is in fair condition, with service from 110 volt non-grounded system. The general care of the premises is good.

PROMINENTLY UNDESIRABLE FEATURES.

The building is quite old and has a large frame iron clad addition, with a second floor or roof space over the main portion. Division walls are not standard either as to height of parapets or protection of openings. The building is located outside the congested district, but is badly exposed. The car storage barn is of fair construction but also considerably exposed. The occupancy of the main building includes light repairing and cleaning, employes rooms, a linemen's department and a stable. Trolley wires although safely hung have defective connections at the main circuit breaker in the attic and the arrangement of wiring resistance etc. used for the linemen's signaling system is not safe. Car wiring is not standard and trolley poles are not drawn down during storage of cars but car circuit breakers are usually thrown. The area of the main building is more than standard, with the whole of both buildings subject to one fire under adverse conditions. Private protective devices are not all standard construction and arrangement.

CONSTRUCTION.

Car House Wash Room and Stable: There are two principal sections the North one being 1 story and 20 feet to eaves with 30 feet in the rear partitioned off by an 8 inch wall extending to the roof, the room thus formed being used by the line department. The South section is 2 story

and 24 feet to eaves except the South portion of the rear which is 1 story and of light frame iron clad construction. The division wall between is 12 inch brick with 18 inch parapets, but with numerous unprotected openings. The total ground floor area is 24700 square feet, with a second or attic floor of 7200 square feet. Walls are 12 inch brick except those of the frame section which are inch boards covered with corrugated iron. Roof is composition gravel on 7-8 wooden sheathing with wooden rafters trusses and posts. Ground floor is of brick or earth and the attic floor light wooden joisted construction, with no ceilings underneath. Stairway is boxed. Pits are communicating with concrete bottoms and brick sides and with tracks set up on wooden posts and stringers and planked over between. There are several frame partitions and the roof has four skylights and a roof house of non standard construction. A room has been excavated under the sidewalk in front and is used as an oil house.

Car Storage Barn: A 1 story building 18 feet to eaves. Area is in a single section 30 by 190 feet equaling 7200 square feet. Walls are 12 inch brick except the front end which is frame iron clad with track doors of the Kinnear steel rolling curtain type. Roof is of slate on wooden sheathing and trusses of light construction, with four 5 x 10 foot wooden slatted ventilators rising above. Floors are of earth.

OCCUPANCY.

Car House Wash Room and Stable: This building is occupied as a wash room, an office and rest room for linemen, employe's room for the car men, car storage, and a stable with 5 horses and 2 wagons. The attic floor may be used for storage purposes but at the present time is vacant. There is sufficient trackage to permit the storage of 43 cars.

Car Storage Barn: This building is used for car storage only with a trackage capacity of 18 cars.

EXPOSURE.

The Car House Wash Room and Stable is exposed on the North by a brick dwelling and frame mercantiles and dwellings at 30 feet distant, on the East by brick and frame dwellings and its component car storage barn at 30 feet distant, and on the South by a 3 story mercantile building through a division wall and by two brick dwellings 25 feet distant.

The Car Storage Barn is exposed by two frame sheds, three brick and one frame dwelling, most of which exposures are not more than ten feet distant.

HAZARDS.

Car House Wash Room and Stable: Heating is by two coal stoves in the wash room and the line department office and a gas stove in the employes rooms, all being apparently safely arranged. Lighting is electric incandescent from 110 volt non grounded circuit, with wires in fair condition. Trolley wires are supported on insulated hangers mounted partly on wooden trough and in good condition, with cutout switch on the pole outside. The trolley has been tapped near the Line Department and with lamps inserted as resistance is used to signal linemen in their residences about the neighborhood. The arrangement of wiring for this signaling system and the connections at a main breaker in the attic were found to be unsafe. The line circuit breakers in the cars are thrown during their hours of storage but trolley poles are not drawn down. Tracks are apparently well bonded. All the principal oils are stored in the oil house under the sidewalk outside and not exposing. Car repairing consists only in adjusting brake shoes and minor repairs to the wiring etc. Oily waste is kept well cleaned up by the repair men each of whom carries a metal tool case to receive waste and his tools; and when oily, the waste is burn-

ed in the stove or in the street outside. The stable was found ordinarily clean and no lights are used except the incandescent electric. Cars are electric heated and lighted except two which have the Peter Smith hot water heaters. The hot water heaters appear to be in fair condition and the electric heaters in good repair but not installed standard. Car wiring is only ordinary and not nearly standard.

Car Storage Barn: This building is used for car storage only and is not heated. Lights are incandescent with wiring in fair condition. Cars are stored with trolley poles in contact but with overhead switches or breakers thrown.

ADMINISTRATION.

At the time of inspection the risks were found to be in good condition as to cleanliness and general care, and employes appear competent and careful. There are 7 repair shed men, 12 linemen, 3 office men, and 2 women, regularly employed here. Fire appliances appear fairly well cared for and employes are instructed as to their use.

Insurance is carried under general form the amounts being mentioned in the value sheet herewith. (SEE VALUE SHEET).

PROTECTION.

Private: The car house wash room and stable has 4 two inch outlets vertical pipe on 4 inch main from city water pipe, with 100 feet of 1 1-2 inch cotton hose attached but with one nozzle missing, 5 chemical fire extinguishers of three gallons capacity and fair construction but not standard, 5 water barrels with two pails at each in the attic, and night watch service with rounds registered by the A. D. T. system. The car storage barn has one station of the night watch system within sight of the risk, but has no other private protection.

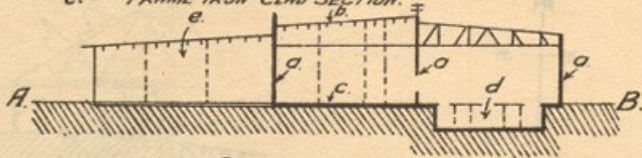
Public: Both buildings have standard fire protection with fire alarm box in the office and fire station with steamer three squares distant.

RECOMMENDATIONS.

1. Provide outside frost proof hydrant and 200 feet of 2 5-8 inch C. R. L. hose for protection of car storage barn.
2. Provide nozzles for all hose, and install sufficient additional approved chemical fire extinguishers so as to make the equipment standard.
3. Repair connections at trolley breaker in attic and wire and arrange linemen's signaling system so as to be safe.
4. Instruct employes to pull down trolleys during the storage of cars. Throwing off the car breaker does not disconnect all the wiring of the cars.
5. Make car wiring and car heater installations standard.

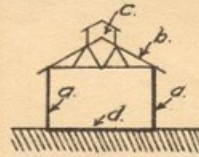
THE COLUMBUS RAILWAY AND LIGHT CO.

- a- 12" BRICK WALLS.
- b- COMPOSITION GRAVEL ROOF ON 7/8" SHEATHING AND WOODEN ROOF TIMBERS SET ON WOODEN POSTS AND ON WALLS.
- c- BRICK OR EARTH FLOORS.
- d- CONCRETE COMMUNICATING PITS WITH TRACKS ON WOODEN STRINGERS, AND POSTS PLANKED OVER BETWEEN.
- e- FRAME IRON CLAD SECTION.

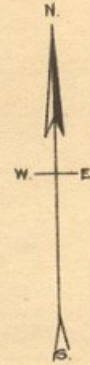


SECTION A-B.

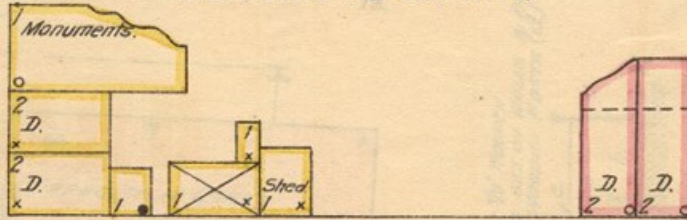
- a- 12" WALLS.
- b- SLATE ROOF ON 7/8" SHEATHING & WOODEN ROOF SUPPORTS.
- c- FRAME VENTILATORS
- d- GRAVEL FLOORS.



SECTION C-D.

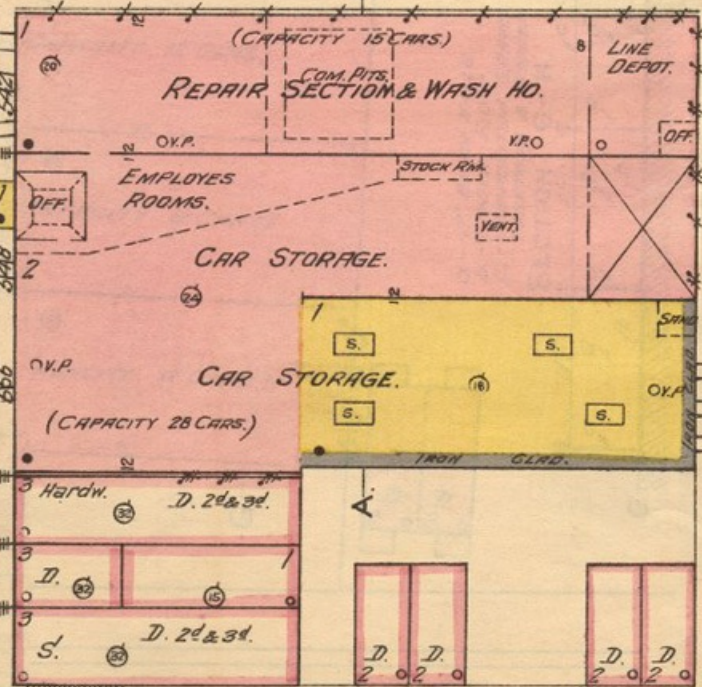


S. HIGH ST. CAR BARN. INDIVIDUAL REPORT No. 1.



E. HOSTER ST.

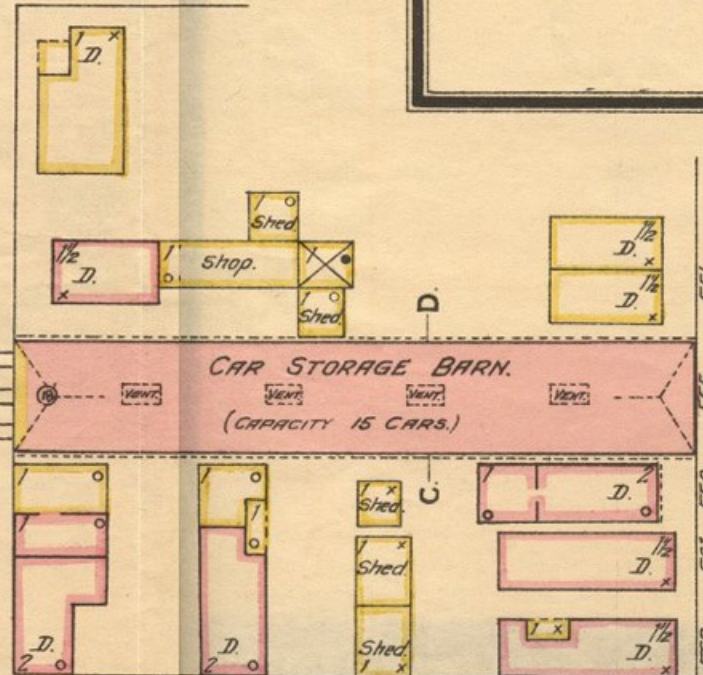
ST.



E. BECK ST.

ST.

S. PEARL



CITY PARK AVE.

D. H. 150'

551
555
559
567
563

8" W.P.